

CERTIFIED LAND CORNER RECORDATION

DESCRIPTION OF CORNER EVIDENCE FOUND, AND ORIGINAL RECORD (If known)

$\frac{1}{4}$ corner 31/32, T.13 N., R.70 W.

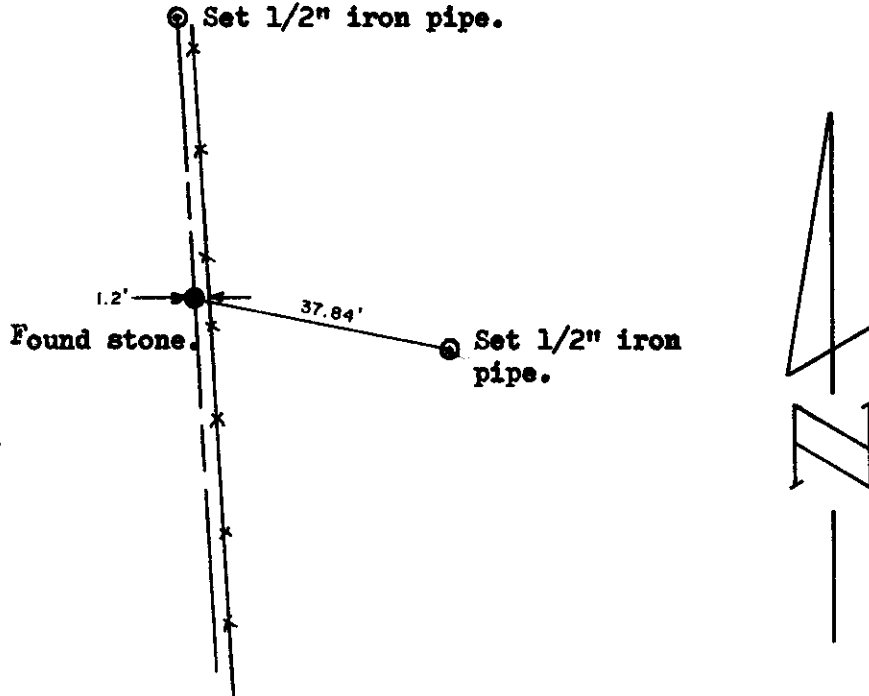
Found granite stone, 18"x16"x4". 1/4 chiseled on west side.

DESCRIPTION OF MONUMENT AND ACCESSORIES ESTABLISHED
TO PERPETUATE THE ORIGINAL LOCATION OF THIS CORNER:

Set stake and lath at corner, chiseled 'X' on top.

References: set 1/2" x 18" pipes, northerly and east-south-easterly.
(See sketch)

SKETCH, WITH COURSE AND DISTANCE TO ADJACENT CORNER IF DETERMINED IN THIS SURVEY.
(May Sketch or Paste Reproduction on Reverse Side.)



I, William D. Braman certify that I have carefully performed or reviewed the work done on the diagrammed corner as reported on this recordation form and approve the same.

William D. Braman
Signature of Surveyor

LS 566
Registration No.

STATE OF WYOMING,
Office of Clerk and Recorder,
County of Taramie

This "corner record" was filed for record on the 18 day of Feb, 1927, was noted on the cross-index plat and is assigned page No. _____, in book No. _____.

Geo. C. Whitehead
County Official

Cross Index No. <u>V-5</u>	T. <u>13</u>	R. <u>70</u>	Mer.
_____	T. _____	R. _____	Mer.
_____	T. _____	R. _____	Mer.
_____	T. _____	R. _____	Mer.
_____	T. _____	R. _____	Mer.
_____	T. _____	R. _____	Mer.
_____	T. _____	R. _____	Mer.

428094

Photographed _____

Indexed _____

Filed _____

Assessor _____